



Tools for Professional Food Processing





Koneteollisuus is a family-owned company that has been manufacturing a comprehensive range of machines for the food industry since 1938 in Finland.

In the food industry, a high emphasis has to be placed on product safety, end-user protection, and legal aspects. Our products are reliable and safe to use, with long service life.

For some products, such as the KT-325 and KT-400 band saws, we have kept the classic looks but rebuilt the machines with modern manufacturing technology and components to improve performance and to keep up to date with the latest safety requirements.

We also produce specialized machines for specific use cases, such as the KT-ALP meat press for tenderizing and flattening steaks, the KT-SH-1 shredder for pulling meat, and the KT-S fish scaler for scaling fish. Many machines suit workflows for creating vegetarian products, and marine versions are also available.

Most of the machines we produce are exported around the world. Any third-party manufactured products we sell have to fulfill the same rigorous quality and testing criteria as our own production.

For complete product specifications, please visit us at www.koneteollisuus.com.

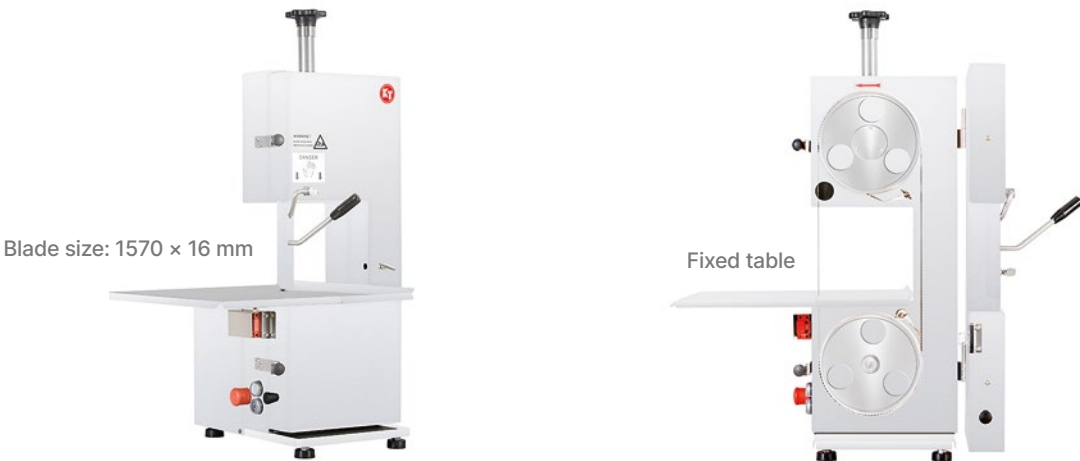
Contents

Stainless Steel Band Saws	4
Classic Band Saws.....	6
Band Saw Blades	7
Manual Mincers.....	8
Automatic Mixer Grinders	12
Meat Tenderizing	15
Fish Scaling.....	19
Meat Slicers.....	20
Cheese Cutters	23
Packaging Machines	24
Knife Disinfectors & Sharpeners	26
Pest Control.....	27

Stainless Steel Band Saws

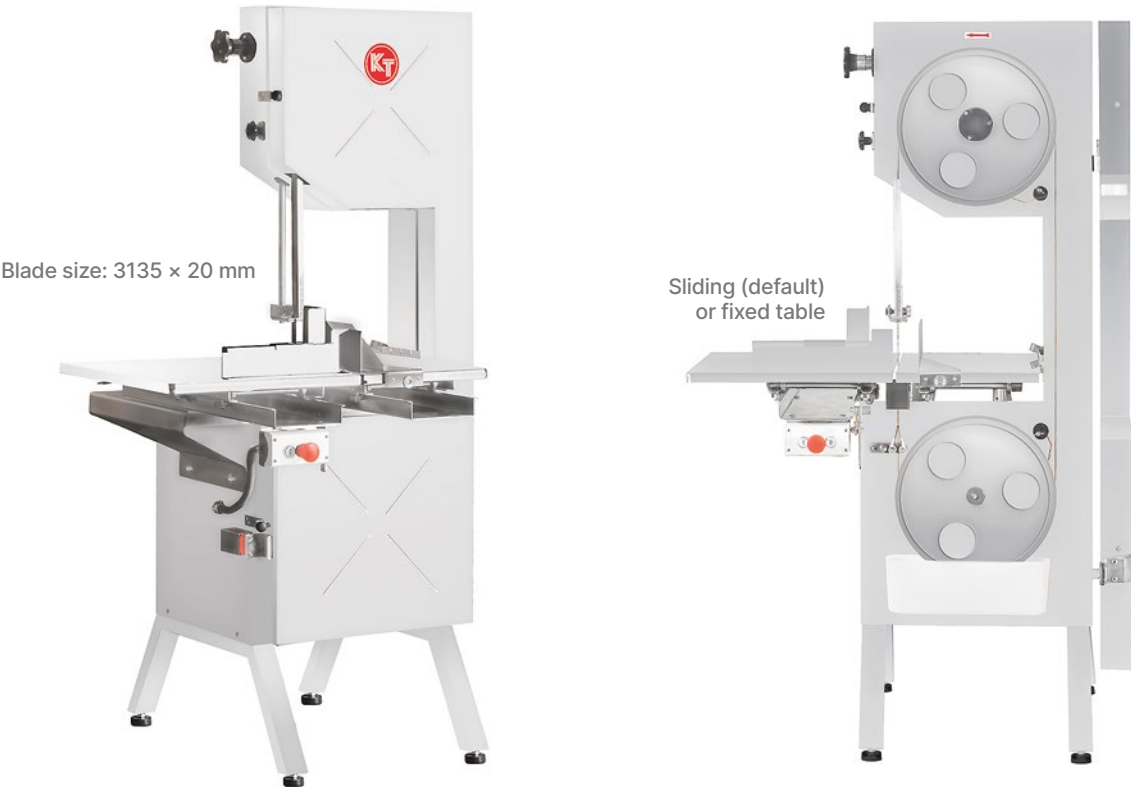
KT-210 Band Saw — 1.1 kW

Small in size, yet equipped with features of bigger band saws.



KT-460 Band Saw — 1.8 kW

A versatile 2-speed saw with comprehensive safety devices.



KT-750 Band Saw — 3.0 kW

Powerful enough for industrial use.



⚡ **More power needed?**
You can order the KT-750 with a 4 kW motor to make it even more powerful.



ⓘ You can also order the KT-750 with a custom-sized fixed table, with extension legs, and as left-handed.

Classic Band Saws

KT-325 Band Saw — 1.8 kW
Classic outside, modern inside.



Blade size: 2345 × 20 mm

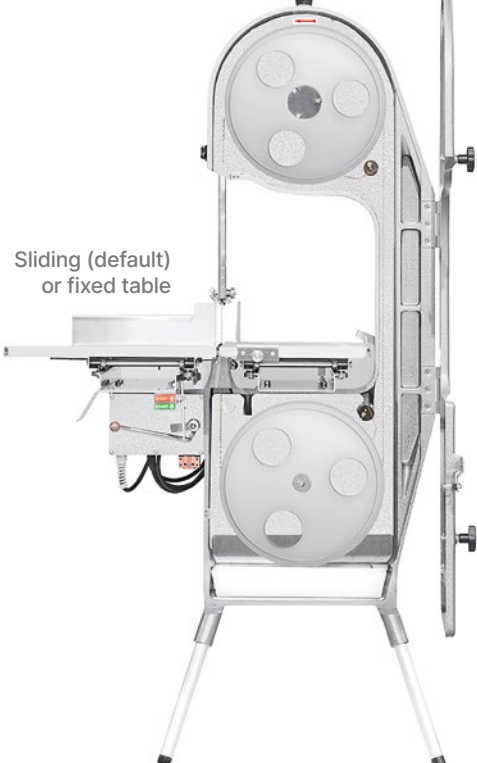


Sliding (default)
or fixed table

KT-400 Band Saw — 1.8 kW
Classic outside, modern inside.



Blade size: 3135 × 20 mm



Sliding (default)
or fixed table

Band Saw Blades

High-quality standard blades come both with new band saws and as an after-sales service.



Custom blades (by length, teeth/inch, width, and thickness) are also available for different use cases.

Manual Mincers

LM-5/P Mincer — 100 kg/h

A compact Enterprise mincer for grinding liver and small amounts of soft and fresh meat.



LM-10/P Mincer — 200 kg/h

A compact Enterprise mincer for grinding small amounts of fresh meat.



Easy to clean

Smaller KT mincers have easily detachable meat trays and grinding houses.



LM-82/P with stainless steel grinding house

LM-22/P, LM-82/P Mincer — 300 kg/h
A powerful, yet compact and quiet mincer for customer-facing premises.



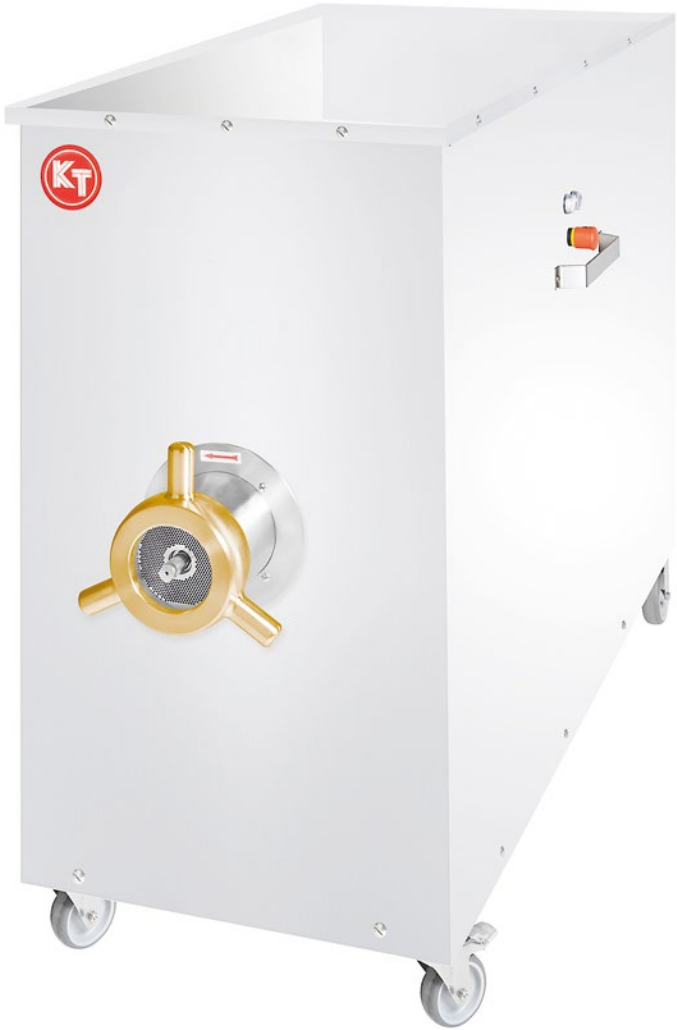
⚙️ Add a footswitch and a sausage filling tube to equip the mincers for making sausages.

LM-32/P, LM-98/P Mincer — 750 kg/h
A strong, medium sized mincer.

Meat tray volume:
35 L



LM-42, LM-130 Mincer — 1500 kg/h (with 7.5 kW grinding motor)
A large, manually fed mincer for special use cases.



⚡ **More power needed?**
You can order the LM-42 or LM-130 with an 11 kW grinding motor to make it even more powerful.

Hopper volume:
95 L

🔧 **Durable**
All KT mincers have strong stainless steel frames.



Easy to clean



Safe to use

Automatic Mixer Grinders

LM-42/A, LM-130/A
1600 kg/h



LM-32/A, LM-98/A
1150 kg/h



LM-22/A, LM-82/A
660 kg/h



Hopper volume:
110 L



Equipped with a
separate mixing motor

Hopper volume:
80 L



Equipped with a
separate mixing motor

Hopper volume:
40 L



✦ Hygienic

You can easily remove the mixing arm in KT mixer grinders to clean all surfaces touching food.

LM-42/280A, LM-130/280A Mixer Grinder — 1600 kg/h (with 7.5 kW grinding motor)
A large automatically mixing and self-feeding grinder for demanding applications.



⚡ More power needed?

You can order the LM-42/280A or LM-130/280A with an 11 kW grinding motor to make it even more powerful.

Hopper volume:
280 L

Equipped with a
separate mixing
motor

Accessories & long-life knife sets

Unger knife sets



Sausage filling tubes



Enterprise knife sets



Minced meat formers



① We also provide foot pedals, outlet protectors, and separating knife sets.



Meat Tenderizing

KT-ALP Automatic Meat Press

Fast and efficient: produces 800 steaks/hour with adjustable thickness.

Durable stainless steel construction

Optional stand available with or without wheels

Easy and safe to operate by sliding the meat tray

Smooth plate (optional)

Textured plate (default)

① The KT-ALP flattens and tenderizes meat to produce minute steaks, schnitzels, and similar products.

KT-SH-1 Meat Shredder — 500 kg/hour
Pulls meat as fast as you can load the machine.

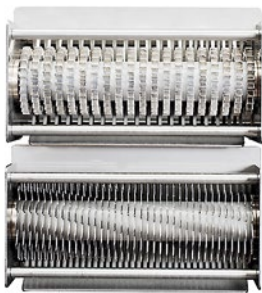
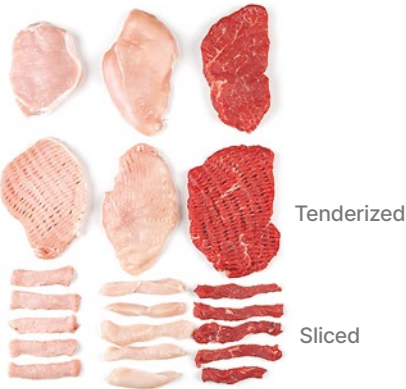


③ The KT-SH-1 produces real pulled meat without cutting or tearing the product.

KT-PK Tenderizer — 1200 steaks/hour
Designed to be easy to clean and maintenance-free.



KT-PK-2 Double Tenderizer — 1200 steaks/hour
Saves time by tenderizing in both directions in one pass.



KT-PK-2 double tenderizing knives



Fish Scaling

KT-S Fish Scaler

For easy and consistent removal of fish scales.



③ An optional plastic cover (500 × 840 × 290 mm) is available to keep the working area clean.

Meat Slicers

F-19S Slicer
Slices meat instantly.



F-19S-2 Double Slicer
Cuts meat into strips instantly.



Slices and strips produced by the F-19S



Cheese Cutters

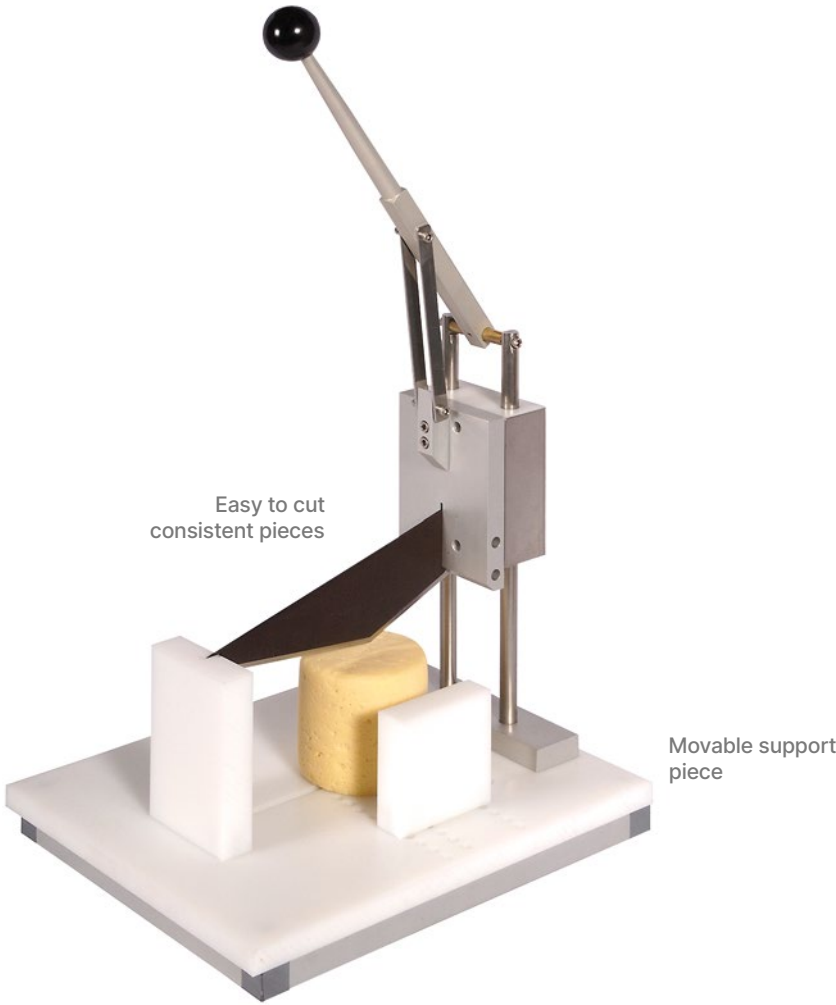
Handee Cheese Cutter

A robust and accurate wire cutter to cut cheese into portions.



KT-FJL Cheese Cutter

An easy to use tool to cut cheese blocks with precision.



Packaging Machines

Henkelman Jumbo 42 Vacuum Packaging Machine

Reliable and simple to use.



KT HB-10 Bag Sealer

Takes less than a second to seal a bag.



KT HB-3 Tray Sealer

User-friendly sealing for plastic film and cardboard lids.



Easy to use

After pressing the lid down, the sealers stay closed and open automatically once ready.



Both machines come with customized packaging container holders that are easy to switch in daily use.

KT HB-4 Tray Sealer

User-friendly sealing for plastic film and cardboard lids.



Knife Disinfectors & Sharpeners

Ozone 621 Knife Holder
Stainless steel rack for disinfection.



Ozone 921 Knife Cabinet
With four 46 cm magnetic supports.



Ozone 721 Knife Cabinet
With two 46 cm magnetic supports.



UV 725 Knife Cabinet
With two 46 cm magnetic supports.



Professional Diamond Sharpener 2100
A fast three-stage commercial knife sharpener.



Sharpening module
can be changed

Electric Knife Sharpener KE-500
With angle guides for thick or thin knives.



Grinding wheels
can be changed

Pest Control

Insect Killer BT-40W (with remote control)
Attracts flying insects both day and night.



Insect Killer BT-20W
Attracts flying insects both day and night.



MID-240 Ultrasonic Pest Repeller
Safe and energy-efficient.





Tools for Supermarkets

Hypermarkets
Grocery Stores
Delicatessens
Butcher Shops
Fish Markets
Market Halls
Galleys
Hotels
Restaurants
Wholesalers
Industry

Koneteollisuus Oy
Järvihaantie 5
Box 49
01800 Klaukkala, Finland
info@koneteollisuus.com
koneteollisuus.com

Made in Finland since 1938



Scan the code to read
more on our website